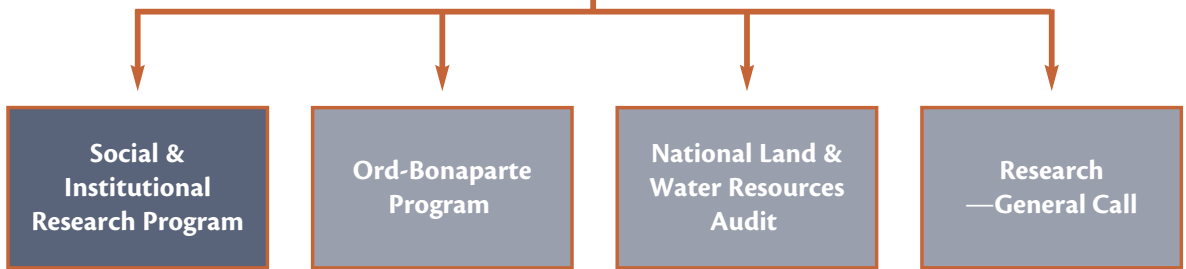


Social and Institutional Research Program (SIRP)

Land & Water Australia Arenas



Cross-cutting Activities



SIRP Themes



Social and Institutional Research Program (SIRP)

Communities

ANU11 Citizens' juries for environmental management: an alternative to CBA?

Citizens juries for decision making in natural resource management — analysis of potential through case studies and establishment of guidelines for use.

Dr Russell Blamey, Australian National University
public@lwa.gov.au

ANU12 Sustainable Resource Management: Consumers' Preferences or Citizens' Deliberations

A PhD researching sustainable resource management: consumers' preferences or citizens' deliberations.

Mr Simon Niemeyer, Australian National University
simon@coombs.anu.edu.au

ANU21 Enhancing the information base on participatory approaches in NRM

Analysis of community participation in natural resource management decision making, establishment of a typology of types of participation and a knowledge base of key references on the subject.

Professor Helen Ross, Australian National University
hross@uqg.uq.edu.au

ANU31 Improving deliberative forms of public participation for decision making on sustainability

PhD researching the improvement of deliberative forms of public participation for decision making on sustainability.

Ms Carolyn Hendriks, Australian National University
carolyn.hendriks@anu.edu.au

ANU37 Indigenous kinship with country: intercultural values of natural resource management

PhD researching indigenous kinship with country and intercultural values of natural resource management.

Ms Diana James, Australian National University
dijames@cres.anu.edu.au

CAG2 Conceptual frameworks for analysing effective policy relationships between players in the field of NRM

Development of a methodology for analysing effective relationships between different levels for government, industry and the community. Methodology applied to case studies and key principles for effective policy relations established.

Mr Noel Beynon, Capital Ag
capitalag@bigpond.com

CSU23 Assessing and managing burnout in Landcare members, leaders and coordinators

Assessing and managing burnout in landcare members, leaders and coordinators.

Dr Allan Curtis, Charles Sturt University
allan.curtis@brs.gov.au

CTC7 Evaluation of integrated catchment management in a wet tropical catchment

Evaluation of integrated catchment management in a wet tropical environment (the Herbert River catchment, north Queensland). Issues included planning processes, impacts on community attitudes and behaviour, information and skill requirements and implementation processes.

Mrs Jennifer Bellamy, CSIRO Sustainable Ecosystems
jenny.bellamy@csiro.au

UNE 44 Creating inspiration

How visual and performing arts shape environmental behaviour

Nick Reid and David Curtis
nrei3@metz.une.edu.au

Policies and institutions

ADF5 Private Sector Natural Resource Management

Investigation of whether larger non-government sector involvement in natural resource management is desirable in Australia and how this might be facilitated through policy and other approaches. Compares Australia, the US and UK.

Dr Stuart Whitten, Australian Defence Force Academy
stuart.whitten@csiro.au

ANU14 Mekong Region Environmental Governance

A PhD researching innovation by resource management institutions.

Mr John Dore, Australian National University
[johndore@loxinfo.co.th](mailto: johndore@loxinfo.co.th)

ANU17 Processes and institutions for resource and environmental management: Australian experiences

Review of resource and environmental policy over the past 3 decades of Australian experience. The review was conducted across issues, jurisdictions, resource sectors, portfolios and institutional forms against a conceptual framework of adaptive policy, institutions and management.

Dr Stephen Dovers, Australian National University
dovers@cres.anu.edu.au

ANU22 Social and institutional implications of landscape and land use change

PhD researching the changing nature of rural communities and the social and economic impacts of policy-driven land-use change at a community and regional level.

Ms Jeanette Stanley, Australian National University
jstanley@cres.anu.edu.au

ANU24 Implications for Australian natural resource management of international experiences in institutional change and reform arising from Sustainable Development.

Identification of the lessons and implications for Australian natural resource management of international experiences in institutional change and reform arising from sustainable development. Research in progress which has produced a working paper on the nature of institutions and policy learning.
Dr Stephen Dovers, Australian National University
dovers@cres.anu.edu.au

ANU36 The Politics of Climate in the Murray Darling Basin

PhD researching the interaction between landscape, climate and society in the Murray-Darling Basin.
Mr Daniel Connell, Australian National University
connellid@cres.anu.edu.au

ANU39 Indigenous Rights

The regulation of Indigenous rights through environmental legislation
Jessica Weir, Australian National University
jessica.weir@aiatsis.gov.au

BRR19 Review and analysis of the drivers of and constraints to producer adoption of sustainable practices derived from research

New insights into the adoption of sustainable practices by farmers. Based on analysis of drivers and constraints to producer adoption of sustainable practices derived from research.
Professor John Cary, Bureau of Rural Sciences
john.cary@vu.edu.au

BRR20 A Method to Map Regional Capacity to Adopt More Sustainable Natural Resources Management Practices

A framework for mapping the socio-economic profile and capacity of NAP regions for change to support sustainable NRM.
Dr Trevor Webb, Bureau of Rural Sciences
trevor.webb@brs.gov.au

BRR21 Identifying Regional Planning Skill Needs For Integrated Natural Resource Management

Identification of, and development of a template to audit the skills and training needs that regional groups may need to develop integrated NRM plans.
Dr Heather Aslin, Bureau of Rural Sciences
heather.aslin@brs.gov.au

CSE4 Integrating cross-jurisdictional planning and assessment for sustainable regions

PhD researching the integration of cross jurisdictional planning and assessment for sustainable regions. Contribution to 'best practice' regional planning and environmental management.
Ms Tiffany Morrison, CSIRO Sustainable Ecosystems
tiffany.morrison@csiro.au

DUV4 Land retirement as a Conservation policy

Evaluation of the use of agricultural land retirement as an element in the mix of Australia's natural resource management policies. Based on 3 case studies.
Mr Philip Hone, Deakin University
hone@deakin.edu.au

GRU21 Farm decision-making and resource use: new structures and changing responsibilities

Analysis of new structures of decision making as a result of increasing vertical integration and corporate involvement in agriculture and evaluation of the on-farm effects on resource use. Based on studies in the Tasmanian potato industry and the Queensland dairy industry
Associate Professor David Burch, Griffith University
D.Burch@sct.gu.edu.au

MMA3 Analysis of Transferability of Successful Organisational and Program Models Across Natural Resource Jurisdictions and Regions

Examination of whether the Healthy Waterways initiative in South West Queensland, which took place over the decade to 2000, provides a model for similar natural resource management challenges in other catchments or in regional, cross-jurisdictional and multi-sectoral contexts. Identification of key characteristics of change management processes and critical success factors.
Ms Mary Maher, Mary Maher & Associates
mail@marymaher.com.au

SYN5 Mechanisms for Improving Integration of Biodiversity into Regional NRM Planning in Australia

One of two projects to identify where biodiversity conservation has been effectively integrated in regional NRM planning across Australia. By identifying factors that have contributed to success the project will recommend most effective mechanisms for providing relevant assistance and information to regional NRM decision-makers.
Mr Tony Gleeson, Synapse Research & Consulting
syncons@ozemail.com.au

TPF2 Options for reform in Australian natural resource property rights, land tenure and land management institutions and arrangements

Examination of the question of "what property right system, and related institutions, will most effectively deliver natural resource management objectives?" Identification of practical steps to further sustainability by innovations in institutional structure, notably property rights.
Mr Paul Martin, The Profit Foundation
Paul_M@profitfoundation.com.au

UNE35 Ecological and social functions influencing governance of natural resources

Development of methodology to define regions based on ecological and social functions influencing governance of natural resources. Based on case studies in the New England area.
Dr David Brunckhorst, University of New England
dbrunckh@metz.une.edu.au



UNE40 Creating a contemporary common property resource management institution

Creation of a contemporary common property resource institution (the Tilbuster Commons) for the joint management of a group of farms in the New England area.

Dr David Brunckhorst, University of New England
dbrunckh@metz.une.edu.au

USA3 Sustainability with profitability: Rural Adjustment via water markets

Evaluation of water markets in NSW, Victoria and SA as an instrument to achieve structural adjustment in irrigation communities. The analysis covered social acceptance of water markets, legislation, and institutional and policy frameworks.

Professor Jennifer McKay, University of South Australia
Jennifer.Mckay@unisa.edu.au

UWO4 The effectiveness of the integration of water and land use planning

PhD researching the effectiveness of the integration of water and land use planning.

Ms Carla Mooney, University of Wollongong
cjmooney@shoal.net.au

UWO5 Integrating carbon emissions trading with major Australian land management initiatives

PhD researching the integration of carbon emissions trading with major Australian land management initiatives.

Mr David Jones, University of Wollongong
david.jones@bakernet.com

VRA1 Mechanisms for Improving Integration of Biodiversity into Regional NRM Planning in Australia

The second of two projects to identify where biodiversity conservation has been effectively integrated in regional NRM planning across Australia.

Mr Viv Read, Viv Read & Associates
vivread@wiredcity.com.au

Decision tools & evaluation

CLW24 Methodological reviews of NRM assessment techniques

Explanation of the main methods of natural resource management decision support and how these can influence the decisions. Provision of guidance to decision-makers on what methods to apply in particular circumstances.

Mr Mike Young, CSIRO Land & Water
Mike.Young@csiro.au

CWA20 Development of an Integrated Catchment Management Software (ICMS) package

Development of an integrated catchment management software package for managers to develop and investigate scenarios for complex catchment issues.

Ms Susan Cuddy, CSIRO Land & Water — Canberra
susan.cuddy@csiro.au

CWE17 Decision points for land and water futures

Postulation of long term scenarios of demands on Australia's water resources under increasing population, industry, services and agricultural production. Also testing of the effects on land and water management and future land productivity.

Mr Michael Dunlop, CSIRO Sustainable Ecosystems
michael.dunlop@csiro.au

CWE18 Spatio-temporal effectiveness of natural resource and rural adjustment policies

Development of a model for exploring alternative land and water policy alternatives against plausible price, cost and climate scenarios over the next 20 years. Based on the Lachlan catchment in NSW.

Dr Russell Gorrdard, CSIRO Sustainable Ecosystems
Russell.Gorrdard@csiro.au

CWE27 Assessing ecosystem goods and services

Assessment of ecosystem goods and services in the Goulburn-Broken catchment.

Dr Nick Abel, CSIRO Sustainable Ecosystems
nick.abel@csiro.au

CWW22 Developing methods for assessing the effectiveness of whole catchment management

Manuals for a Self Evaluation Framework for Integrated Catchment Management.

Dr Geoffrey Syme, CSIRO Land & Water — Perth
geoff.syme@csiro.au

DAV41 Using the 2001 census round to monitor structural change in agriculture

An analysis of existing and potential future trends in structural change in Australian agriculture. An update the work undertaken on structural change in agriculture by the National Land & Water Audit using 2001 census data from agricultural and population censuses.

Dr Neil Barr, Department of Natural Resources & Environment (Victoria)
Neil.Barr@nre.vic.gov.au

UAD17 Institutional change enabling kangaroo harvest to promote sustainable rangeland landscapes

PhD researching institutional change enabling kangaroo harvest to promote sustainable rangeland landscapes.

Ms Dana Thomsen, University of Adelaide
dana.thomsen@adelaide.edu.au

UQL10 Integrated information management system for catchment managers

Development of an integrated information management system and a catchment education and information exchange program for catchment managers.

Dr Bruce Hooper, University of Queensland
Bruce.Hooper@catchment.com

Continued overleaf

Decision tools & evaluation (continued)

USQ3 Conceptual frameworks for analysing effective NRM policies and programs

Identification of suitable methodologies for analysing the effectiveness of natural resource management policies and programs at commonwealth, state and regional levels. Methodology applied to case studies and key principles established for effective policies that integrate biophysical, social and economic dimensions.

Professor Charlie Zammit, University of Southern Queensland
zammit@usq.edu.au

UWA27 Community catchment groups, land use change and environmental management systems

PhD developing a strategic framework for the integration of an EMS at a catchment level.

Ms Megan Farrelly, The University of Western Australia
mfarrell@geog.uwa.edu.au

Research methods & capacity

ANU18 Environmental science: from independent experts to post-modern process managers

PhD researching the global trend to encourage research that is integrated both within science (across disciplinary and institutional boundaries) and between scientists and stakeholders. This is also a trend away from traditional extension approaches to research application to more consultative and participatory models

Dr Lorrae Van Kerkhoff, Australian National University
lorrae.vankerkhoff@anu.edu.au

ANU43 Audit Outcomes and Local Government

Extending Audit outcomes to enhance rural local government environmental capacity

Su Wild River, Australian National University
swildriv@cres.anu.edu.au

ING1 Where's Wally? — Reflections on integration of social science in NRM organisations 1980–2000

Where's Wally? — Reflections on integration of social science in seven natural resource management organisations, 1980–2000. An oral history-based project.

Dr Alice Roughley, Land & Water Australia
Alice.Roughley@lwa.gov.au

RPM2 Evaluation of producer initiated and managed R&D

Evaluation of R&D where social interactions and producer involvement is important, such as the producer network of the Sustainable Grazing Systems R&D program. Provision of guidance for future producer initiated and managed R&D.

Dr Jennifer Andrew, Resource Policy and Management Consultants
jenny@repol.net.au

SYN1 Participatory research methodologies in NRM

Development of guidelines for stakeholders, particularly users of research, to participate in natural resource management R&D.

Mr Tony Gleeson, Synapse Agric & Resource Consulting
syncons@ozemail.com.au

UCW5 Collaborative R&D Projects

Assessing impacts and learnings from large scale collaborative R&D initiatives

Alison Browne, Curtin University
brownal@ses.curtin.edu.au

UTA11 Building the knowledge base of the social and institutional dimensions of NRM

Development of a conceptual framework and principles to establish a high quality knowledge base of social and institutional dimensions of natural resource management.

Dr Elaine Stratford, University of Tasmania
Elaine.Stratford@utas.edu.au

TPF1 Methodology for NRM law-in-context studies

Development of a framework for the conduct of cross-disciplinary studies that will lead to regulatory approaches which are effective in generating sustainability behaviours in natural resource management.

Mr Paul Martin, The Profit Foundation
Paul_M@profitfoundation.com.au

UME29 Integration of research and development in catchment management

Evaluation and analysis of integration of R&D in catchment management. The research sought improved understanding of, and means for, the integration of outcomes of land- and water-based research into catchment management planning and implementation processes.

Rodger Grayson, University of Melbourne
rodger@civenv.unimelb.edu.au

UMU14 Interdisciplinary research methodologies in NRM

Clarification of the nature of interdisciplinary research and exploration of skills and tools that facilitate such research. Based on case studies and presented a strategy for achieving 'post disciplinary' natural resource management R&D.

Associate Professor P. Newman, Murdoch University
newman@central.murdoch.edu.au

UTA11 Building the knowledge base of the social and institutional dimensions of NRM

Development of a conceptual framework and principles to establish a high quality knowledge base of social and institutional dimensions of natural resource management. Identification of a capital assets model for analysing social and institutional issues.

Dr Elaine Stratford, University of Tasmania
Elaine.Stratford@utas.edu.au

Want to know more?

Visit our website <www.sirp.gov.au>

Read our reports and factsheets available on the free CD-ROM

Natural Resources Management—People and Policy

Order by Freecall 1800 776 616

Order or download from our online products catalogue at

<www.lwa.gov.au/sirp/publications.asp>

Contact the SIRP team

Dr Alice Roughley, SIRP Coordinator

Email: alice.roughley@lwa.gov.au • Telephone: (02) 6263 6029

Ms Gill Whiting, Program Officer

Email: gill.whiting@lwa.gov.au • Telephone: (02) 6263 6001

Land & Water Australia

Telephone: (02) 6257 3379 • Facsimile (02)6257 3420

Email: public@lwa.gov.au • Web: <www.lwa.gov.au>

June 2003



Land & Water

A U S T R A L I A

research • development • innovation